

# *ALLEGATO N.G3/1*

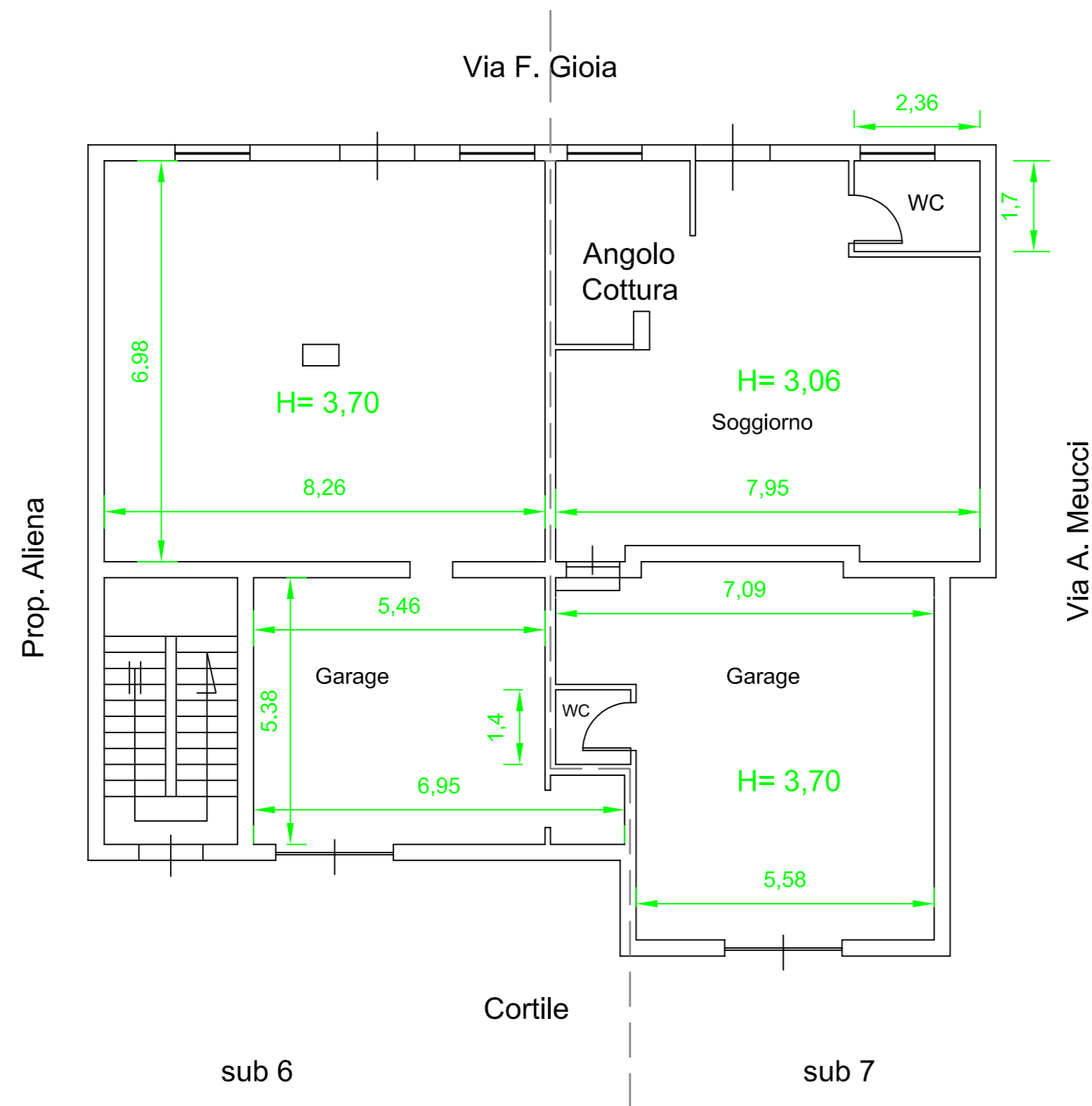
## *Planimetrie*

# STATO DI FATTO

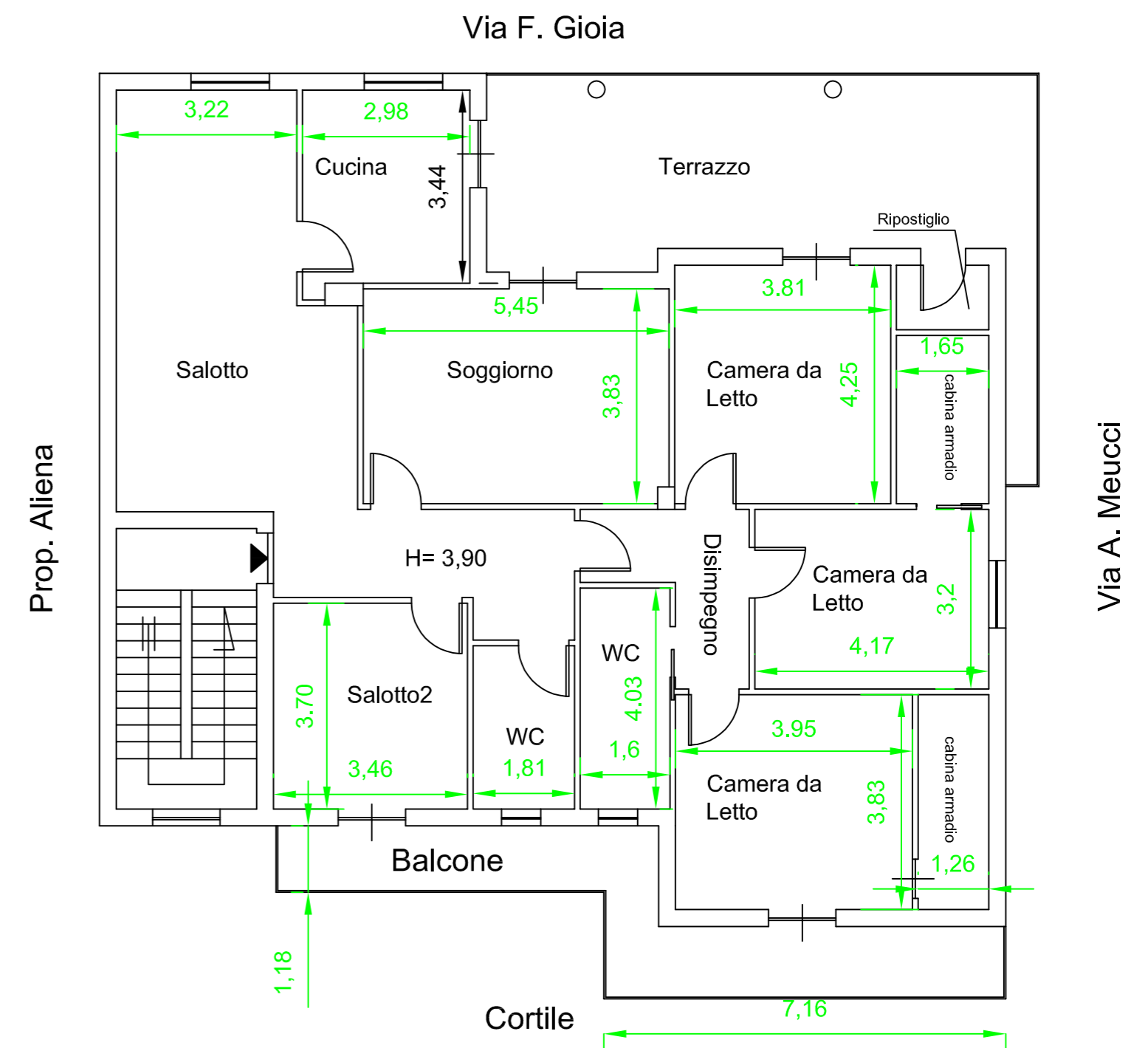
## Immobili Via Meucci

LEGENDA	
X	quota u.m. ml

### piano terra



### piano 1



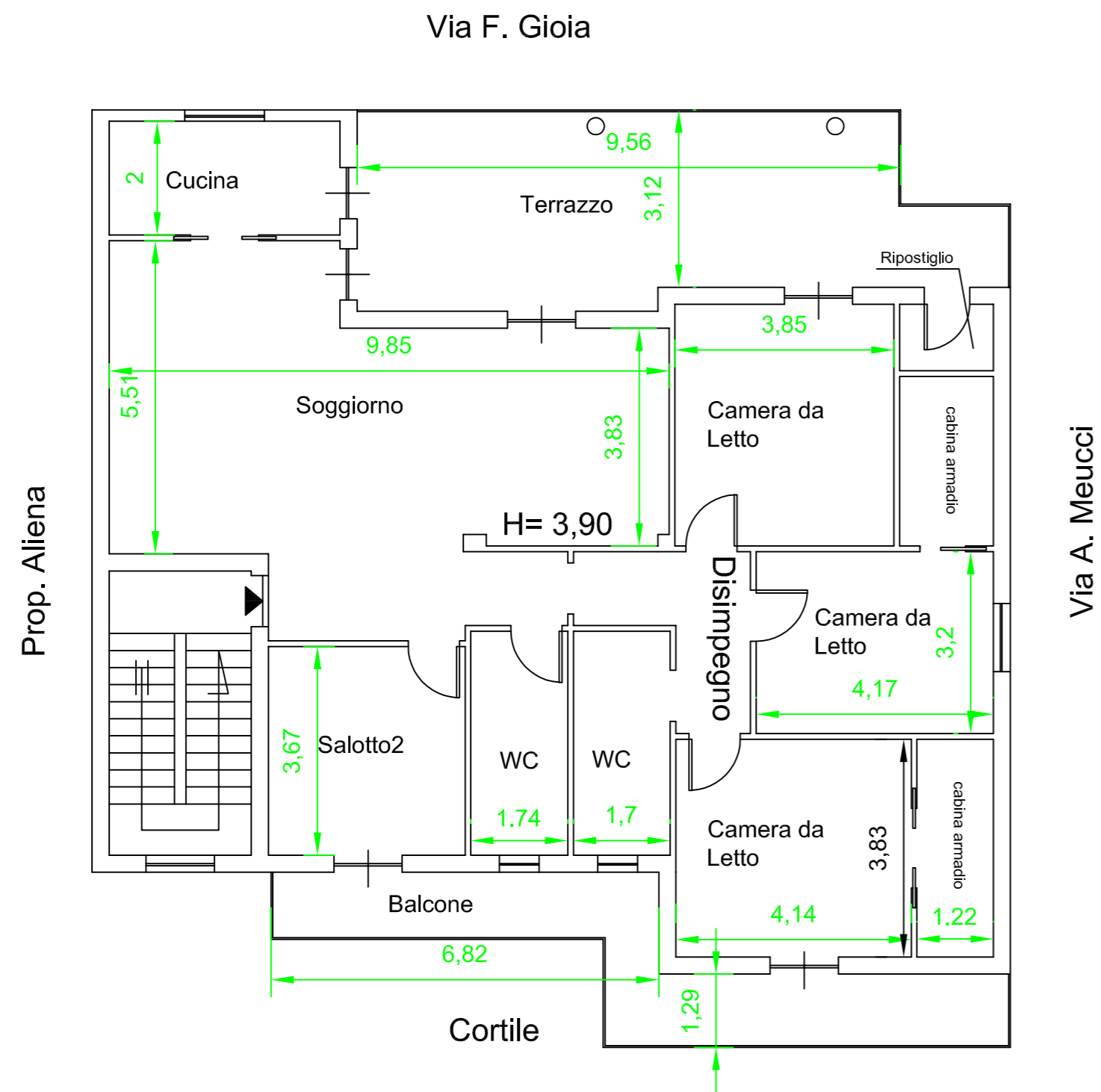
<b>ING. Roberto PEPE</b>		
Consulenza Tecnica di Ufficio Esec. Imm. N.306.13 + 573.13		
Creditore: ILTA srl + 1		
Debitore: Partenopea Polli + 2		
tavola: <b>01/a</b>	scala: fuori scala	Il tecnico: data / rev.

# STATO DI FATTO

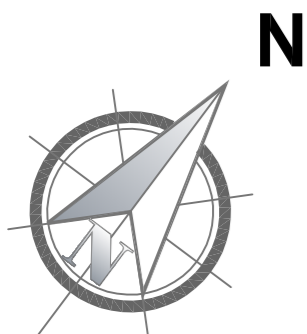
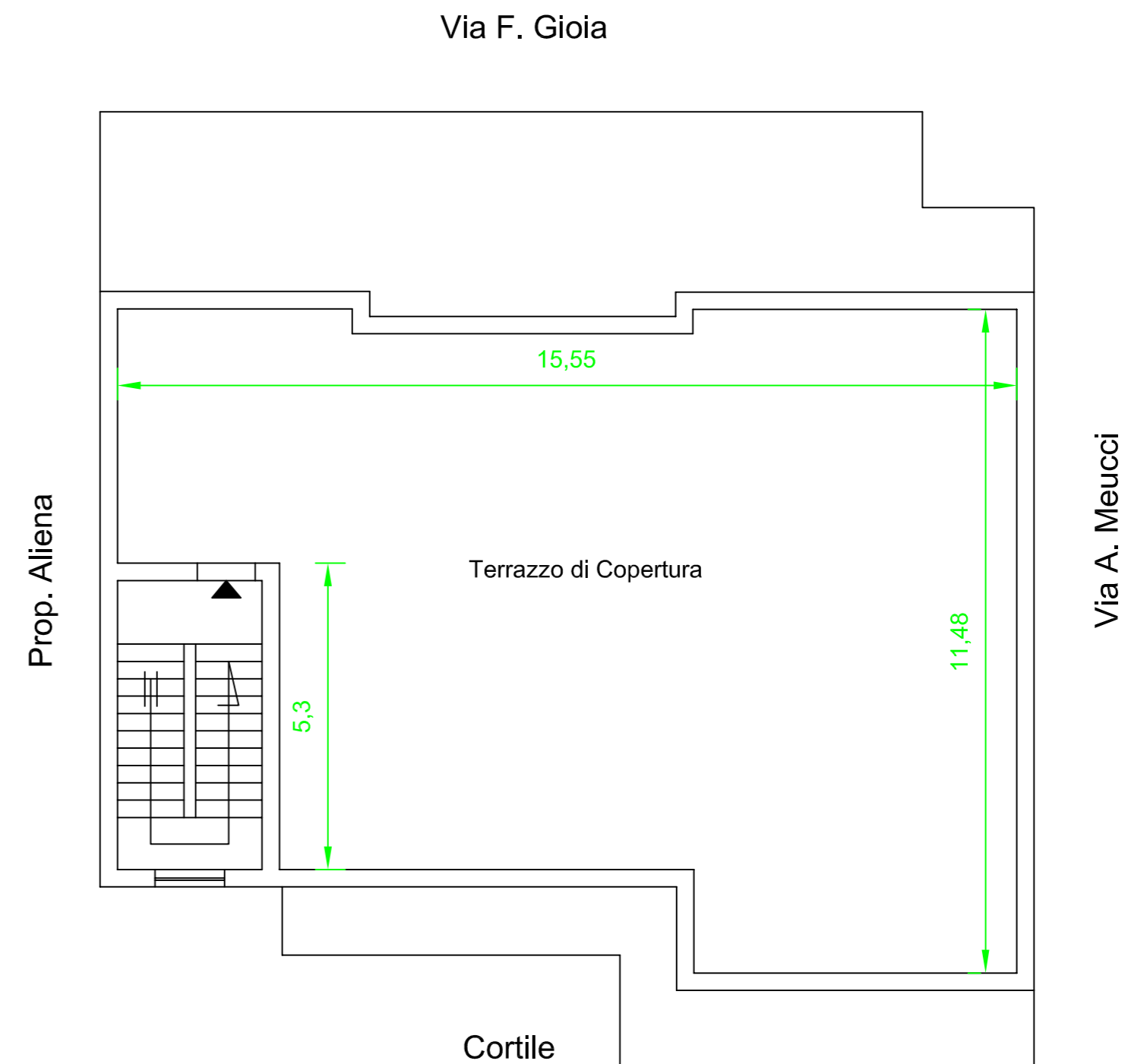
## Immobili Via Meucci

LEGENDA	
X	quota u.m. ml

### piano 2



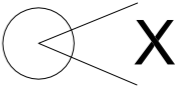
### copertura



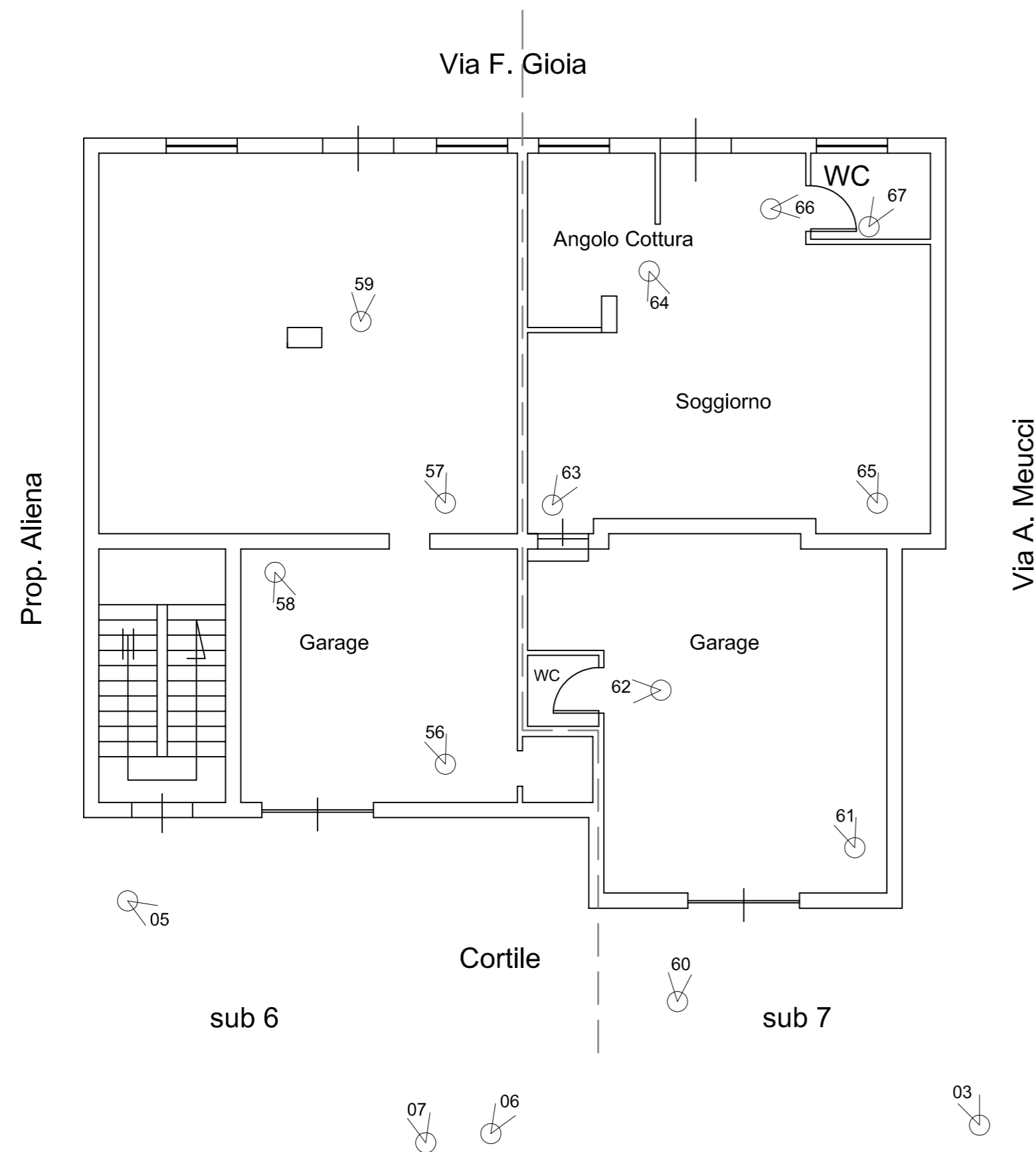
<b>ING. Roberto PEPE</b>		
Consulenza Tecnica di Ufficio Esec. Imm. N.306.13 + 573.13		
Creditore: ILTA srl + 1		
Debitore: Partenopea Polli + 2		
tavola: <b>01/b</b>	scala: fuori scala	Il tecnico: data / rev.

# CONI OTTICI

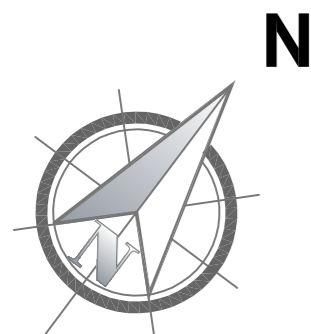
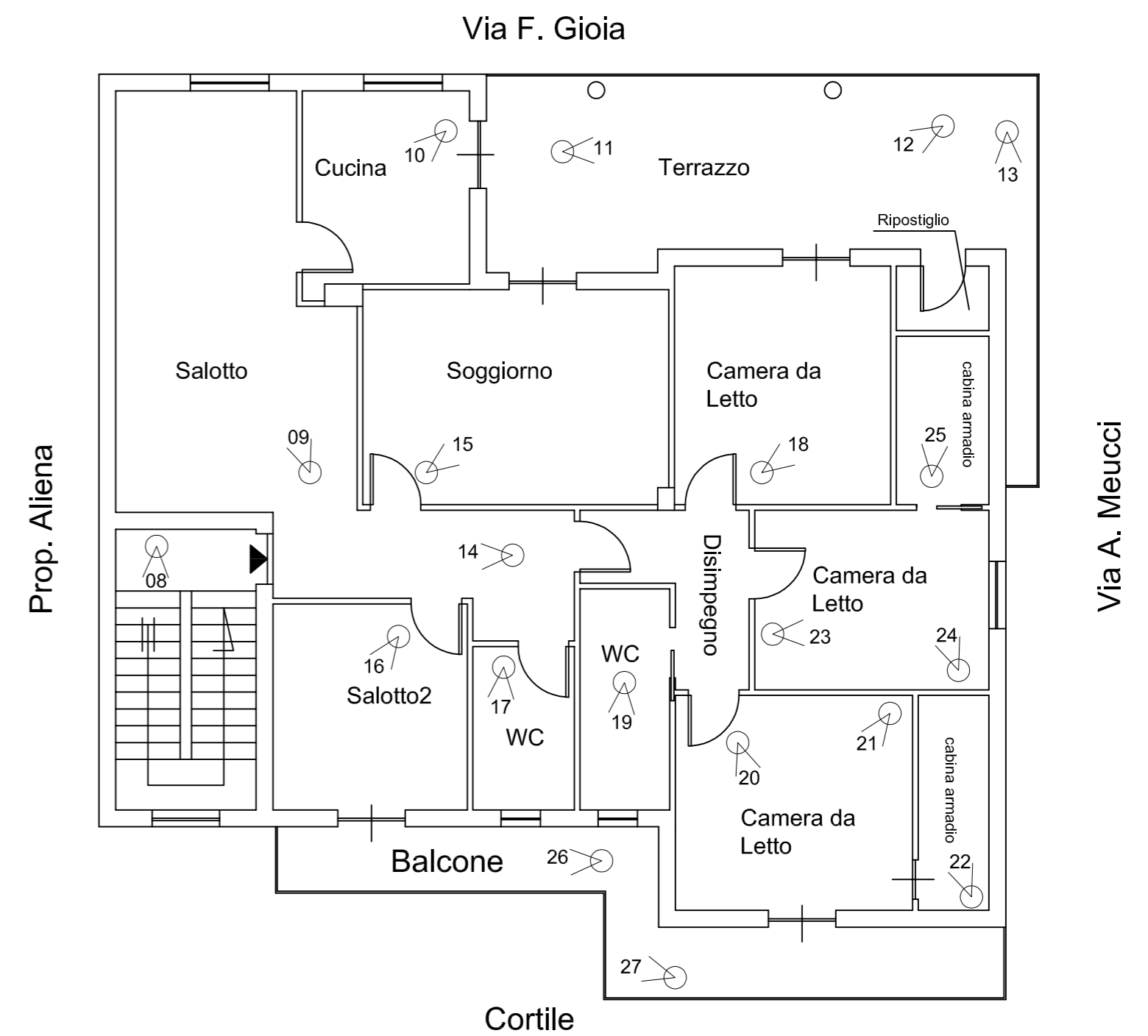
## Immobili Via Meucci

LEGENDA	
	cono ottico foto n.x

piano terra



piano 1

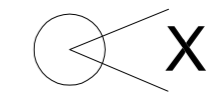


<b>ING. Roberto PEPE</b>		
Consulenza Tecnica di Ufficio Esec. Imm. N.306.13 + 573.13		
Creditore: ILTA srl + 1		
Debitore: Partenopea Polli + 2		
tavola: <b>02/a</b>	scala: fuori scala	Il tecnico: data / rev.

# CONI OTTICI

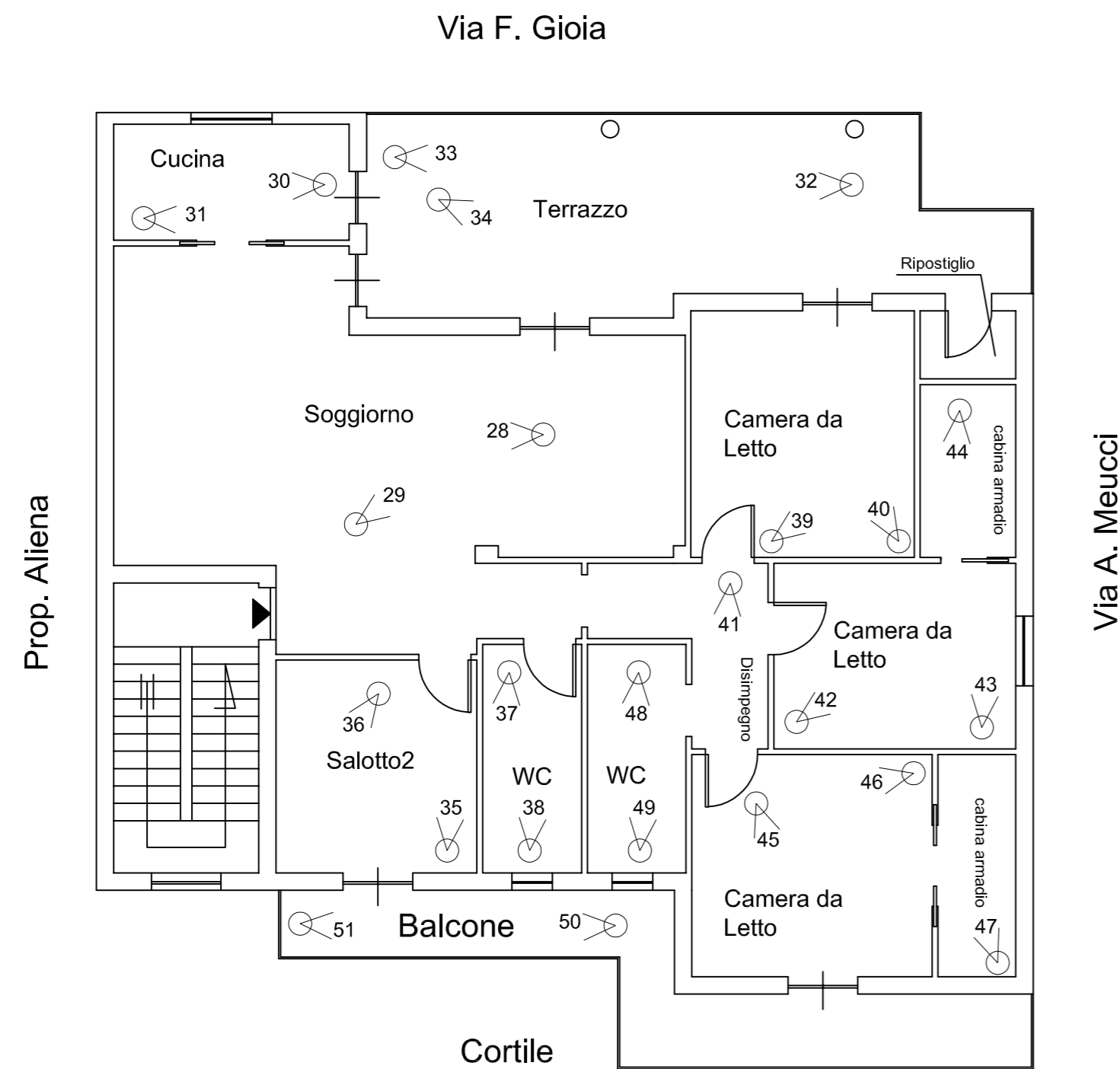
## Immobili Via Meucci

### LEGENDA

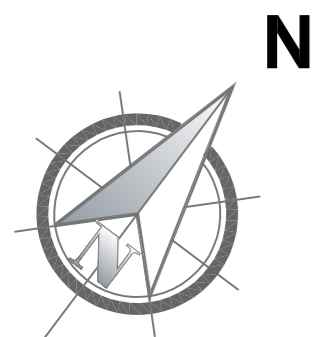
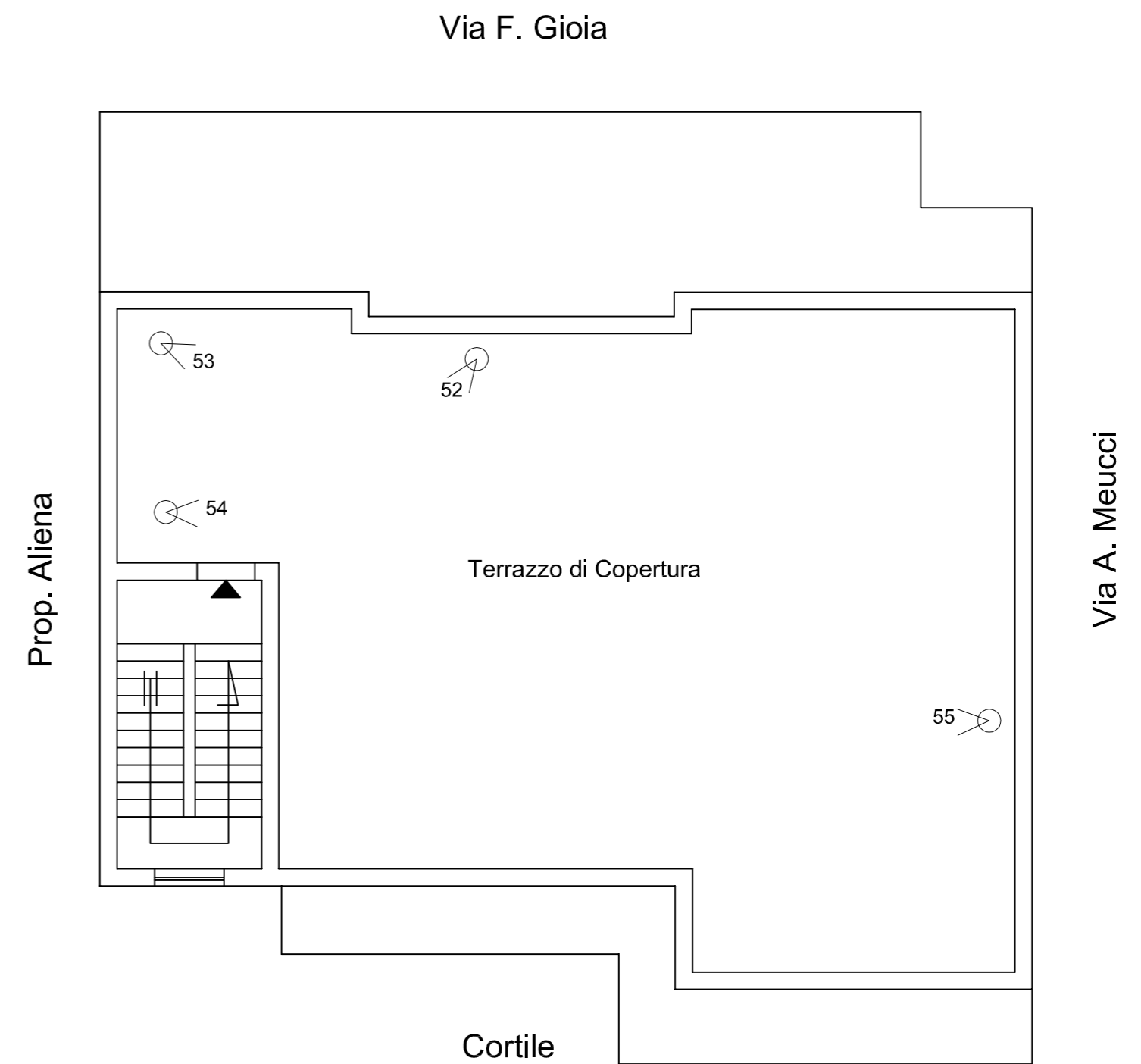


cono ottico foto n.x

### piano 2




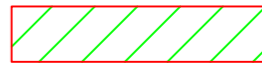
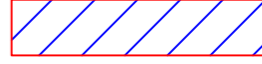
### copertura



<b>ING. Roberto PEPE</b>		
Consulenza Tecnica di Ufficio Esec. Imm. N.306.13 + 573.13		
Creditore: ILTA srl + 1		
Debitore: Partenopea Polli + 2		
tavola: <b>02/b</b>	scala: fuori scala	Il tecnico: data / rev.

# Immobili Via Meucci

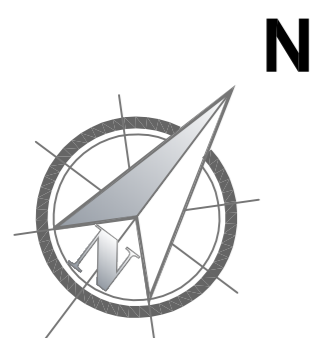
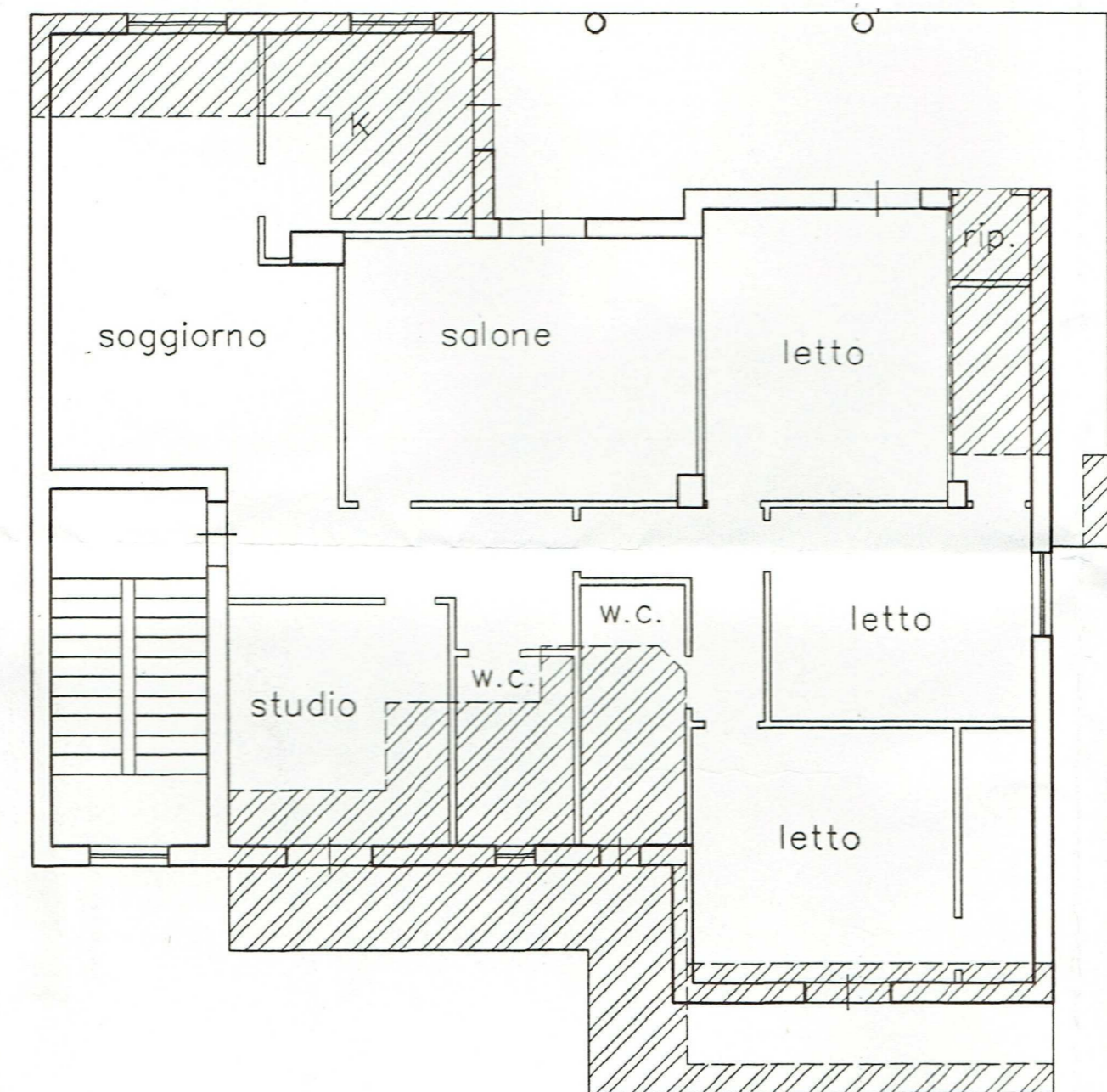
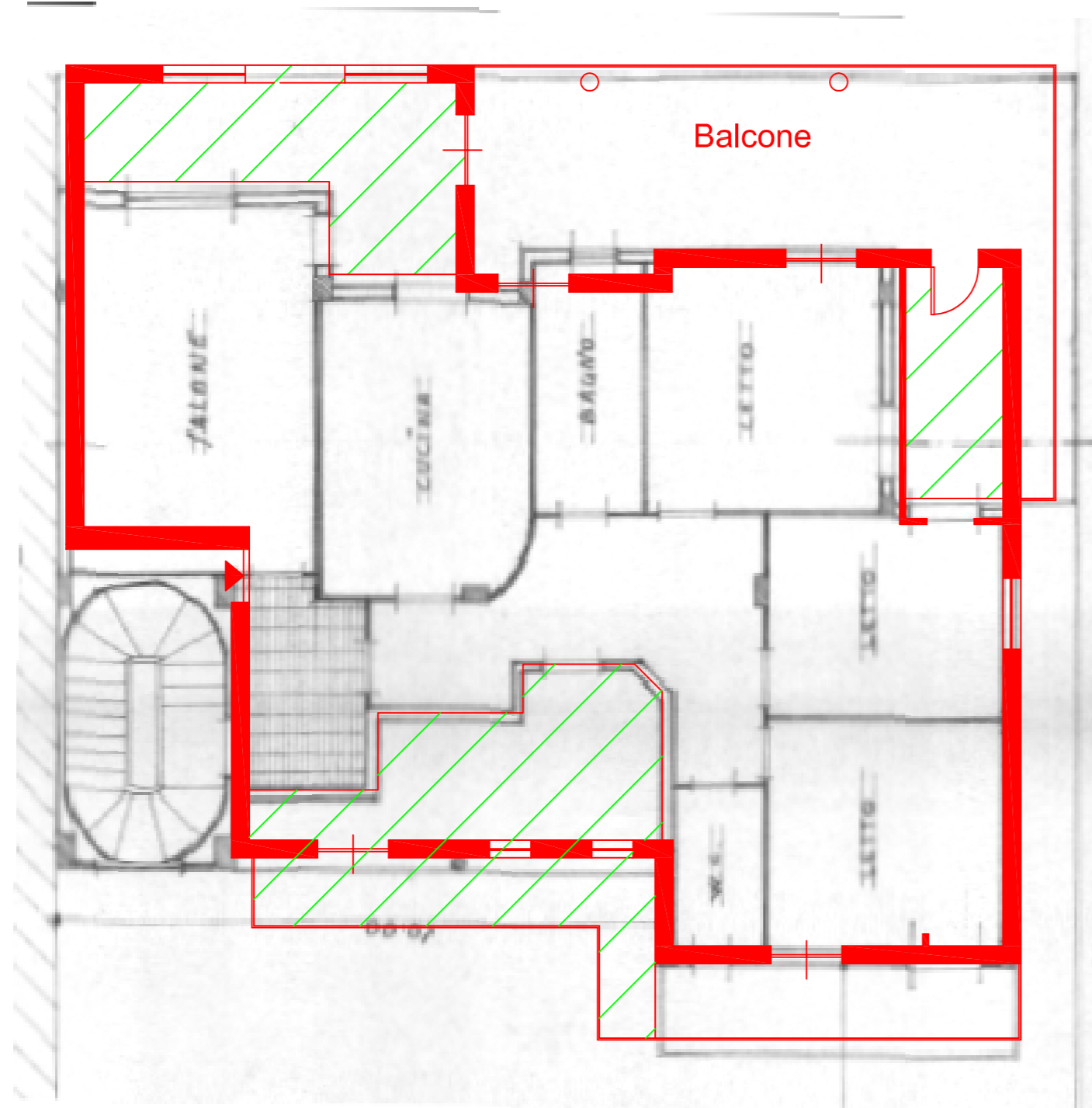
## Corrispondenza con titoli edilizi

LEGENDA	
	confine stato attuale
	zona abusiva oggetto di istanza di condono
	zona abusiva

piano 1

cfr. stato di fatto PC 4128

condono 509



<b>ING. Roberto PEPE</b>		
Consulenza Tecnica di Ufficio Esec. Imm. N.306.13 + 573.13		
Creditore: ILTA srl + 1		
Debitore: Partenopea Polli + 2		
tavola: <b>03/a</b>	scala: fuori scala	Il tecnico: data / rev.




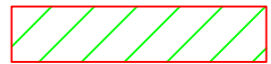
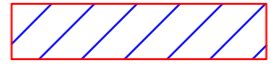
# Immobili Via Meucci

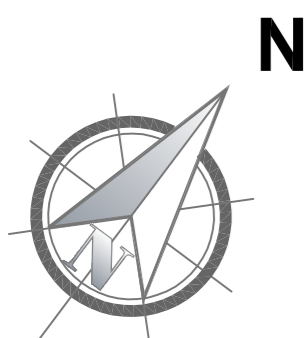
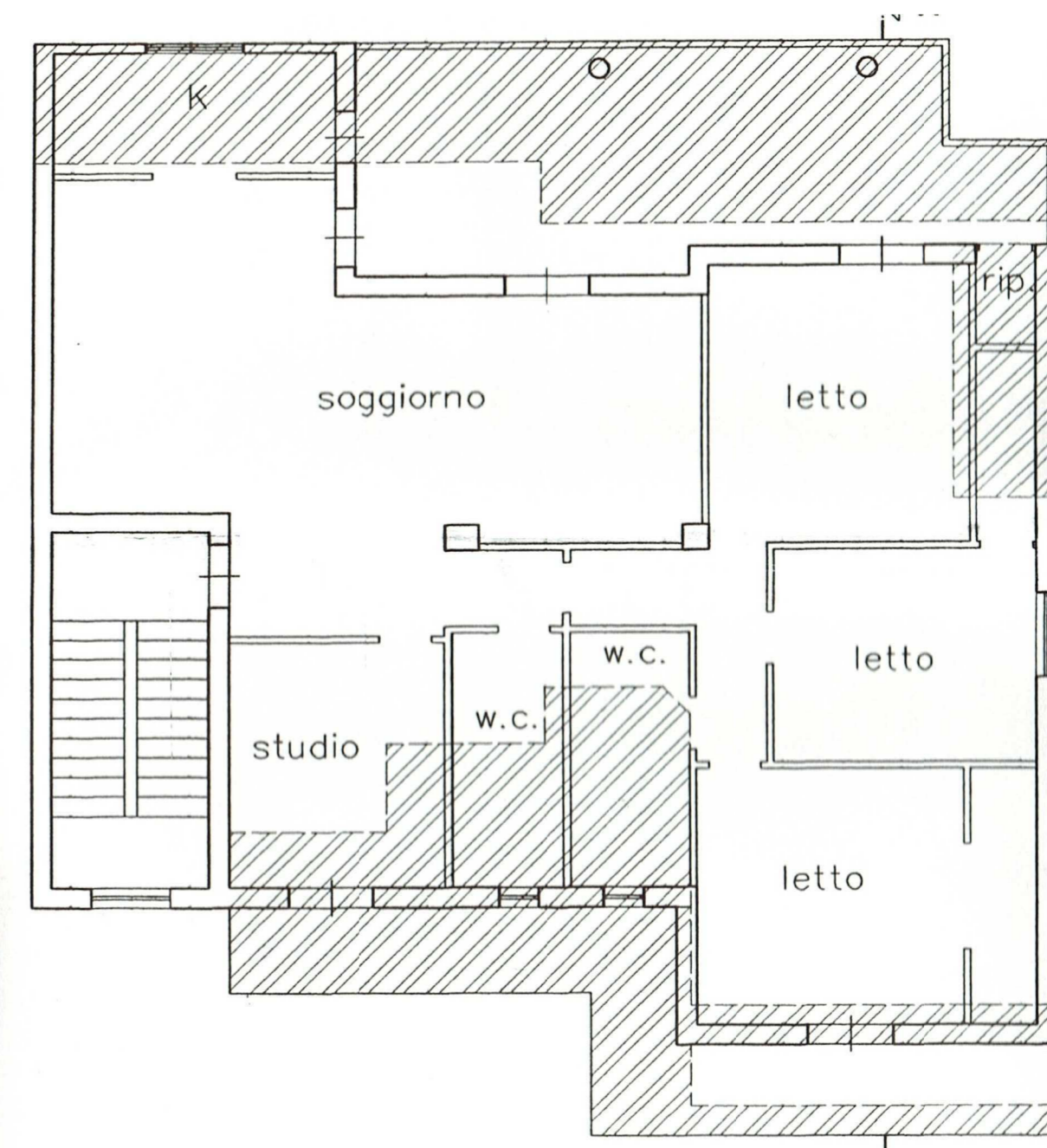
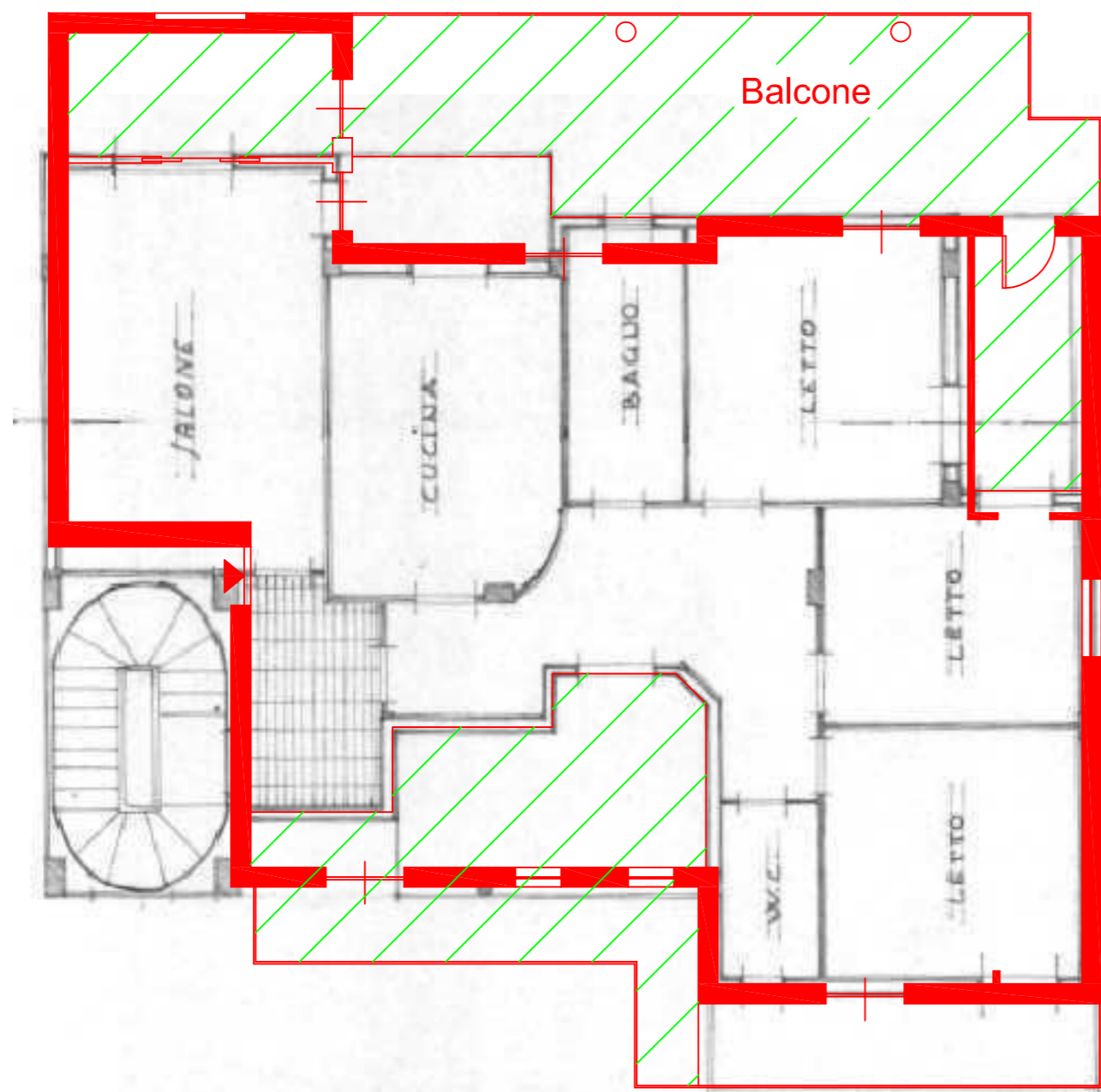
## Corrispondenza con titoli edilizi

piano 2

cfr. stato di fatto PC 4128

condono 508

LEGENDA	
	confine stato attuale
	zona abusiva oggetto di istanza di condono
	zona abusiva



<b>ING. Roberto PEPE</b>		
Consulenza Tecnica di Ufficio Esec. Imm. N.306.13 + 573.13		
Creditore: ILTA srl + 1		
Debitore: Partenopea Polli + 2		
tavola: <b>03/b</b>	scala: fuori scala	Il tecnico: data / rev.

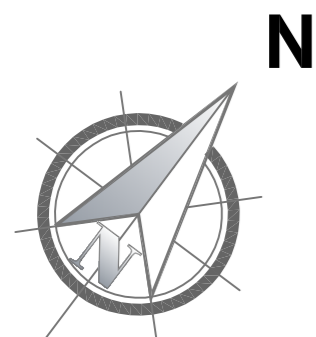
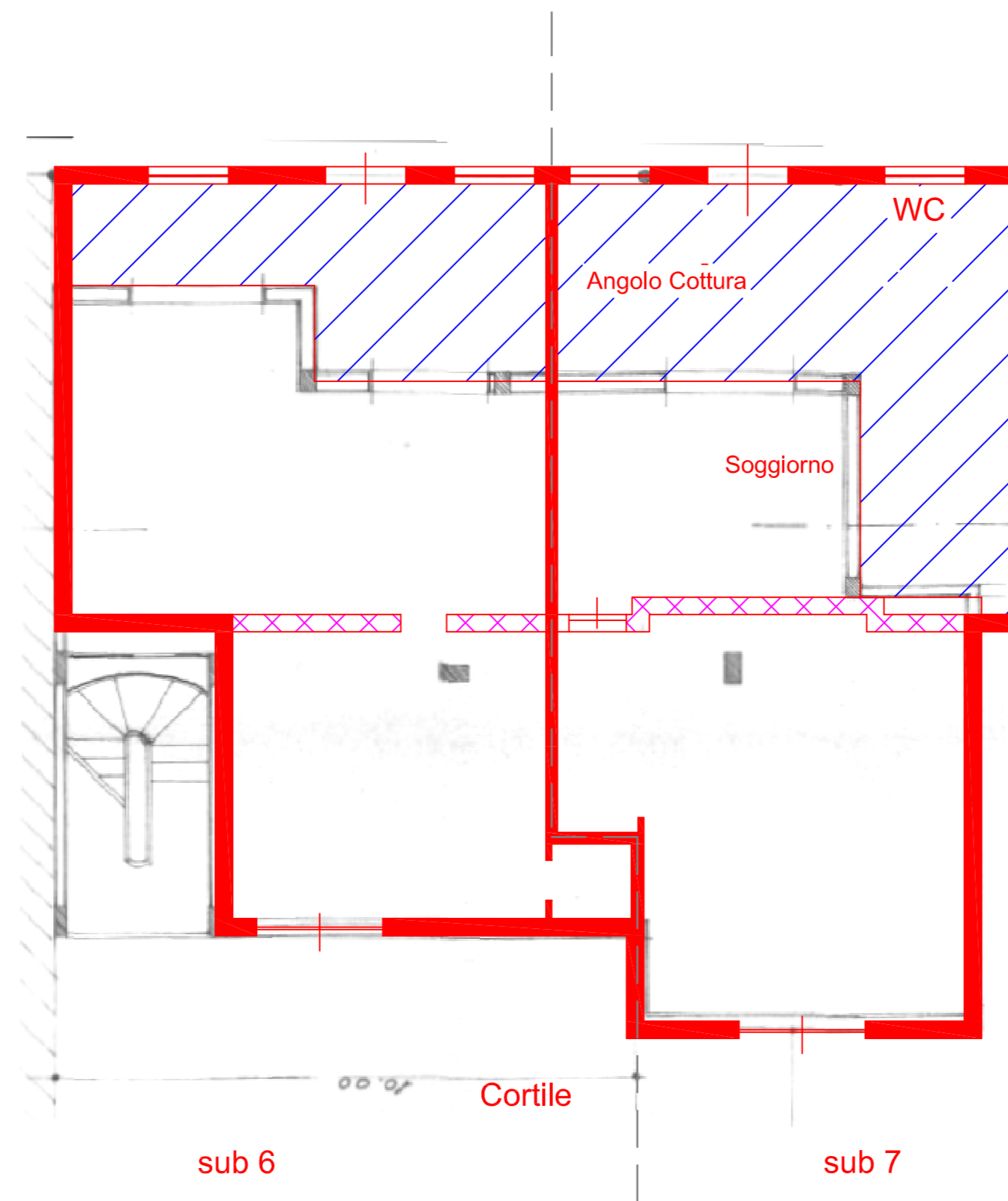
# Immobili Via Meucci

## Corrispondenza con titoli edilizi

piano terra

cfr. stato di fatto PC 4128

LEGENDA	
	confine stato attuale
	zona abusiva oggetto di istanza di condono
	zona abusiva
	tramezzi nuova disp.



<b>ING. Roberto PEPE</b>		
Consulenza Tecnica di Ufficio Esec. Imm. N.306.13 + 573.13		
Creditore: ILTA srl + 1		
Debitore: Partenopea Polli + 2		
tavola: <b>03/c</b>	scala: fuori scala	Il tecnico: data / rev.