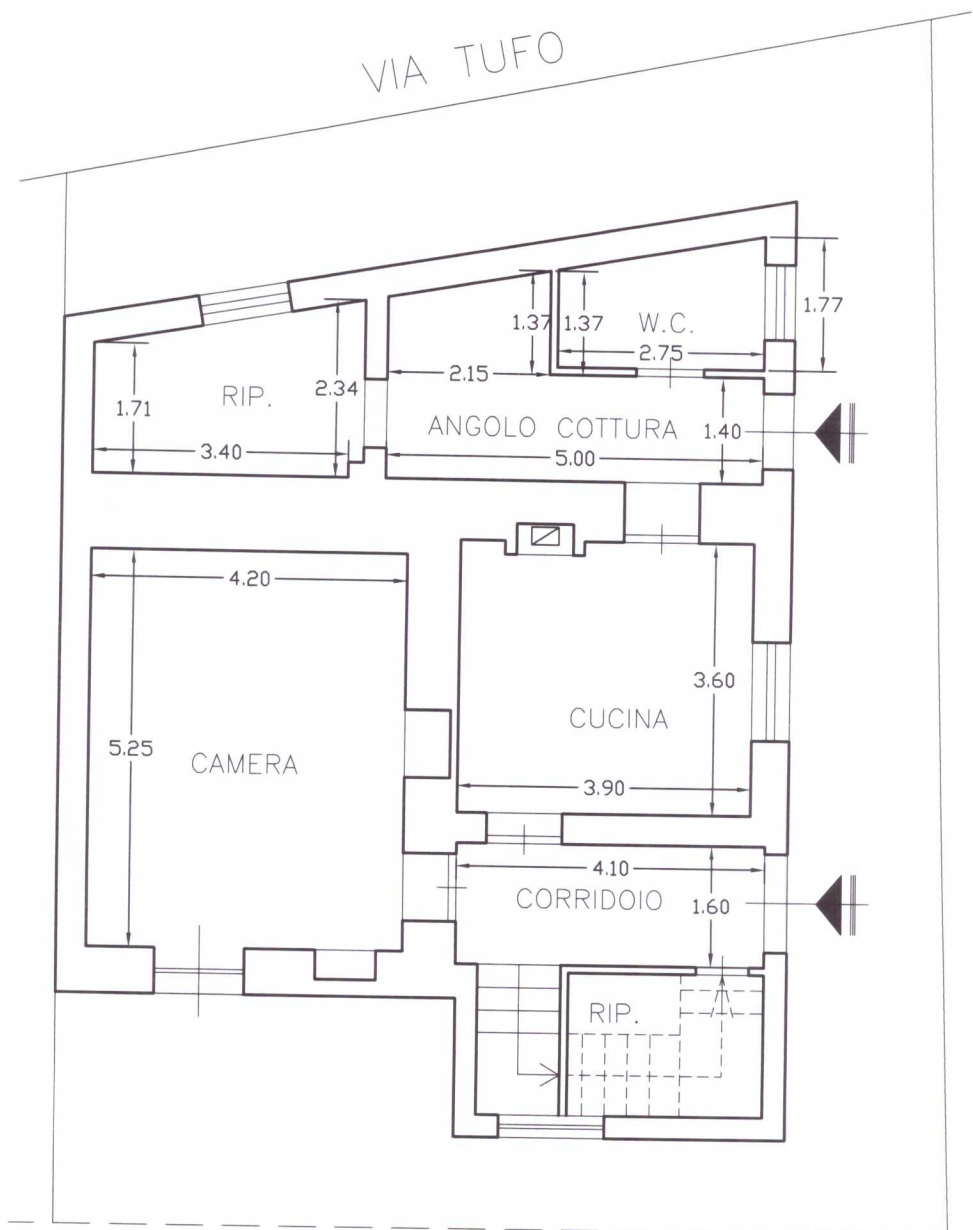
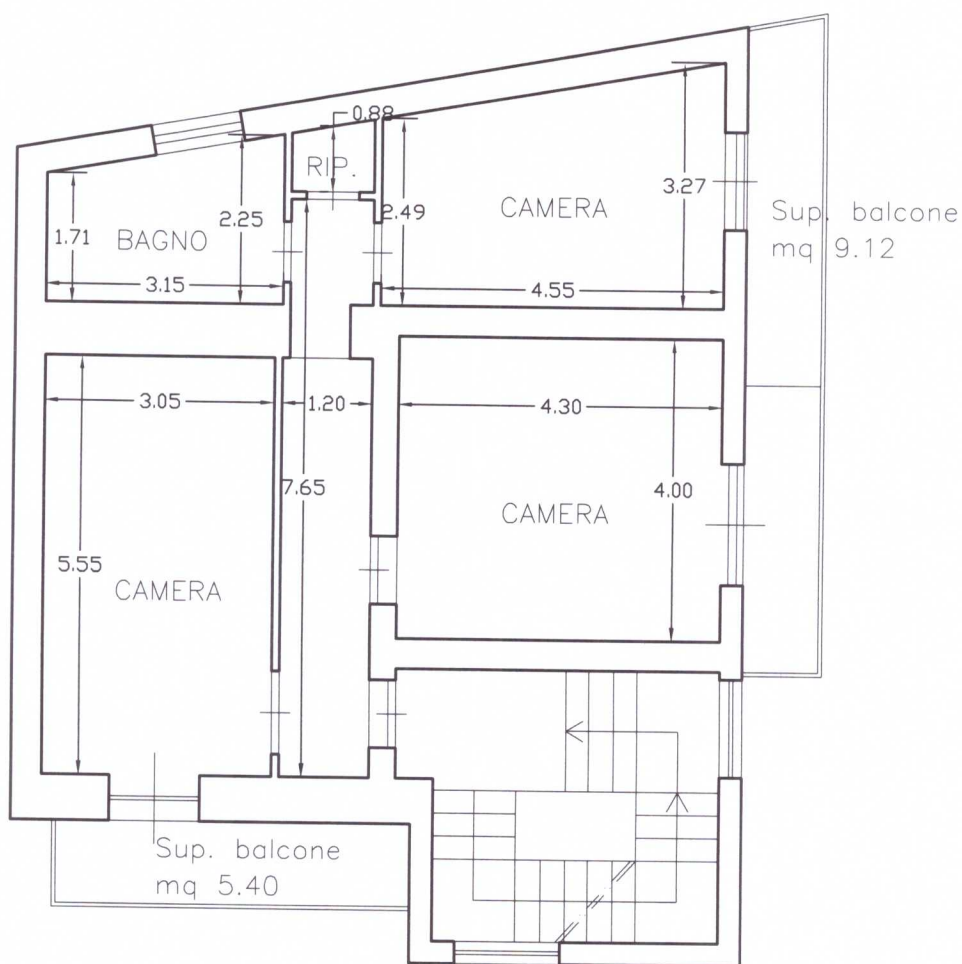


PLANIMETRIA - RAPP. 1:100
PIANO TERRA - H= mt.2.70
Sup. Lorda mq 102.70



PLANIMETRIA - RAPP. 1:100
PIANO PRIMO - H = mt. 2.70
Sup. Lorda mq 102.70



PLANIMETRIA – RAPP. 1:100
PIANO SECONDO – Hm = mt. 2.40
Sup. Lorda mq 74.60

